



# Fourteen Locks Past & Present





1904



1905

A View of lock 17 on the left, but is it real? On the right a great shot of lock 20 and 21 which is lacking the visitors centre you are in today.



A snowy view of locks 8 to 12 in 1935 before the motorway was built.





1964



2016

Notice how the landscape has changed over the years, the photo on the left shows the house at the bottom of the lock flight, yet the photo on the right all you can see is the motorway. This is lock 11 but is also known as the mystery lock due to the shelves on the side. There no agreement about why the lock was built this way? What do you think?



P.W.Phillips



1904



2016

Looking over the pond towards lock 20 in 1904 on the left and in 2016 on the right, notice how much new tree growth there is and in the 2016 photo the old lock keepers house has gone.





2001



2010

Lock 20 in 2001, then during its restoration in 2010.

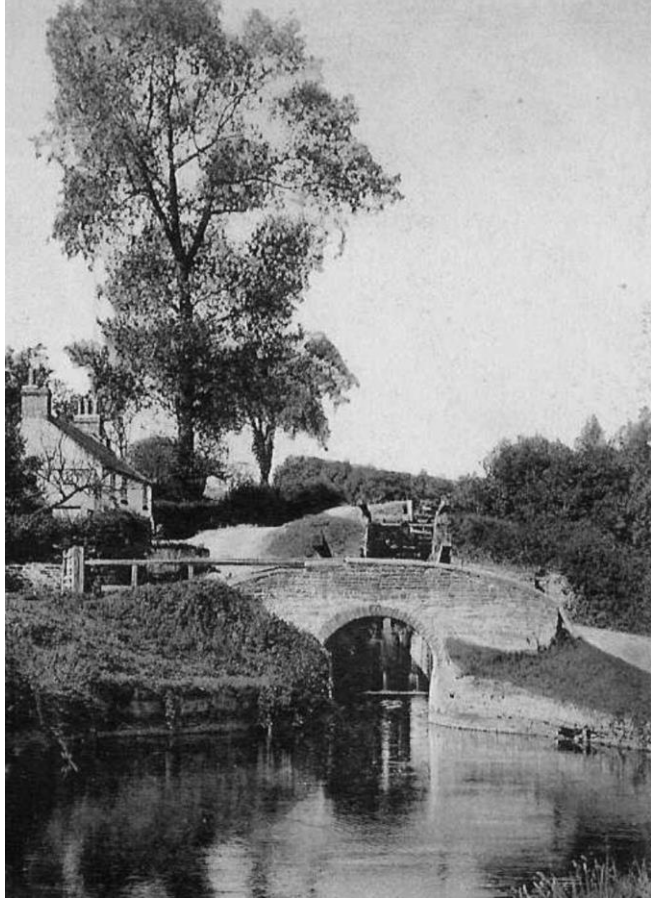


1910



On the left is a look up the flight from lock 10 to 12. On the right a look up the flight from lock 9 to 12, Notice the mechanism for the paddle board on the top lock, they are now deemed to be dangerous and a more modern gate would not have it installed.





2003

A look through the bridge into lock 13 and above at Pensarn Cottage which has changed very little. It would be great to see this restored today.





2003



2016

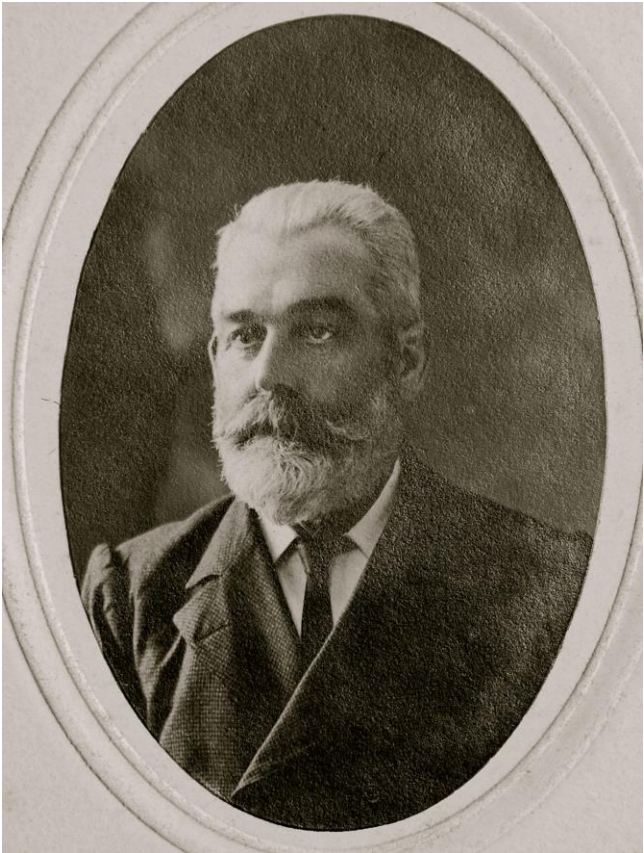
With thanks to Heritage Lottery for their support and funding, Lock 18 Pound has been brought back to its former glory and looks fantastic. A lot of work has been done to restore the pounds, ponds and the locks.



2016

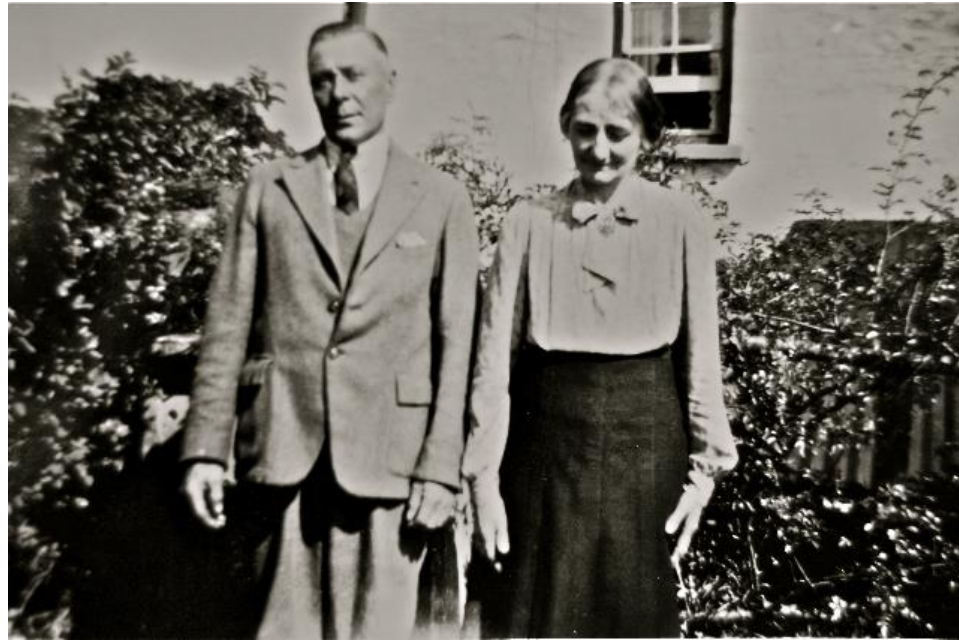
A look at the pond and canal centre situated between Locks 20 and 21 on a sunny day.





**Henry Bailey**

The Last lock keeper when the locks were still quite busy.



**Dia Brookes & his wife May**

The last lock keeper to sign the toll book in December 1935 for three boat loads of furniture. It has been suggested that the last boat to use the locks was around 1945.



**Jack Brookes**

The last lock keeper when the flight was non-navigational.